



proudly owned and operated in  
**new zealand**



**SKY**TECH

**SKY**TTECH

sky hoists / sky decks / logistic solutions

# SKY HOISTS SKY DECKS



SKYTECH

## SKY HOISTS SKY DECKS

# SkyTech's Solutions for Construction Projects New Zealand Wide

If you need a materials handling solution for your multi storey and high rise projects, look no further than SkyTech. No matter if you are constructing a brand new high rise or renovating an existing structure, SkyTech can help.

SKY HOISTS	2
SKY HOIST ELECTROELSA	4
SKY HOIST YHX SERIES	6
SKY DECKS	8
SKY DECK 2200	10
SKY DECK 2800	11
SKY DECK 3100	12
SKY DECK 4200	13
HOLD DOWN BRACKET SYSTEM	14
TRANSPORTATION SPECIFICATIONS	15
CONTACT US	16

## ABOUT SKYTECH

SkyTech provides specialist Hire equipment throughout NZ. Our goal is to be the leader in providing Sky Hoists and Sky Decks for complex building projects while meeting the highest standards for safety and innovation. We are a New Zealand owned company so all profits stay in NEW ZEALAND.

Take advantage of SkyTech's turnkey offerings, which includes installation and removal of Sky Hoists and Sky Decks. Our staff are trained technicians that specialise in Sky Hoists and Sky Decks.

We also offer on-site logistical support with a range of pre-built trolleys to assist in the movement of products to and from site that are designed to lift up and onto our decks.

If you need a material handling solutions for your multi storey and high rise projects, look no further than SkyTech. No matter if you are constructing a brand new high rise or renovating an existing structure, SkyTech can help.

- ✓ Sky Hoists
- ✓ Sky Decks
- ✓ Onsite Logistic Solutions

### Top 10 Reasons to choose SkyTech

#### Our Products:

1. NZ owned company, all profits stay in NEW ZEALAND
2. Can be customised to suit your project.
3. Represents high quality and provides unbeatable on-site performance.
4. Increases on site efficiency with substantial labour savings.
5. Provides for a safer working environment.
6. Enables safe and efficient lifting of materials and personnel on site.
7. We have accessories, like our trolleys to assist movement of products to and from site.

#### Our Team:

8. Dedicated, reliable and hardworking.
9. Thinks outside the box to find solutions to your onsite problems.
10. Committed to working towards making you successful.

ABOUT SKYTECH





SkyTech construction elevators are Worksafe Compliant and set the industry standard for safe, and reliable vertical transportation on commercial construction and industrial job sites

SkyTech provides temporary construction hoists and elevators that allow general contractors to increase productivity and improve safety on the job site. Our construction lifts provide workers with a smooth, and fast ride up to the worksite instead of taking a time-consuming climb multiple times daily. This time-saving technique creates less “wear and tear” on personnel, which in turn increases productivity, reduces the risk of on-site accidents and heightens worker morale.

Ideal for vertically transporting both materials and personnel to elevated worksites, our secure and reliable construction hoists eliminate the need for separate personnel and materials elevators. We offer single, and dual cab construction elevators.

Common applications for construction elevators to be used in, include:

- New high-rise buildings
- Building renovations
- Bridge construction
- Turnaround projects
- Shipyard construction projects

You can find our products in several industries around the world due to our high quality, and unbeatable on-site performance.

## YHX Hoist

YHX.SC series construction hoist (builder's hoist) is a construction equipment elevated by rack and pinion which can be used on construction sites for transportation of personnel and materials. It can be used in many different places as a permanent or semi-permanent elevator, such as storage, high towers etc.

### Features

- Light weight, fast and easy conversion from left to right hand and single to twin installation.
- Plug and play electrical installation, excellent driving comfort with frequency inverter drive (VFC).
- Attractive and modular built up design.
- Fault diagnostic system, customer adapted car sizes on request.

## ElectroElsa Hoist





### Features

- Quick and safe mounting directly from inside the cab or platform. It can be easily transformed from a lift into a hoist and vice versa.
- The interchangeability of components offers maximum versatility of use and reduces investments.
- The ElectroElsa hoist is Ideal for renovations in historic centres and where space problems exist, they can be installed in demolished stairwells and in compartments designed for permanent lifts.
- Easily moved with cranes or forklifts.
- It reduces transport costs thanks to an innovative and practical system for tipping and closing the loading platform.
- Low maintenance cost.
- Fingerprint scanner option for increased security.

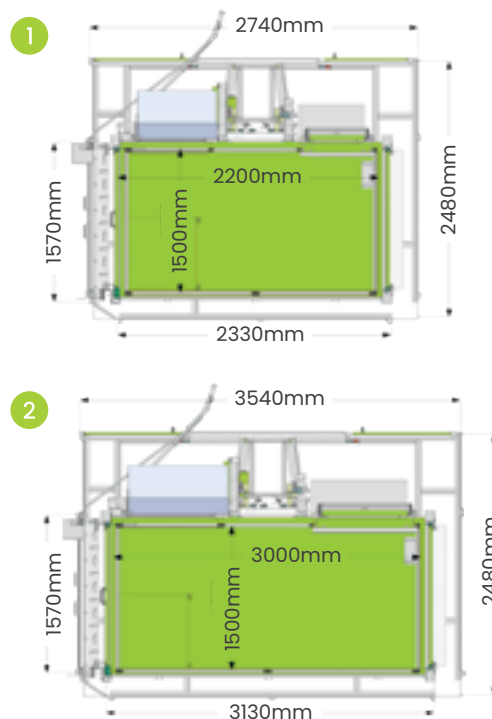
See our the ElectroElsa Hoist in action at: [https://youtu.be/q99hzJn4\\_u4](https://youtu.be/q99hzJn4_u4)

**SKYHOISTS****SKYTECH**

## SPECIFICATIONS **ELECTROELSA**

	Elsa H20	Elsa H20 LPC
Capacity with Overload System	1  x15 o/or 2000kg 2  x22 o/or 2000kg	1  x15 o/or 2000kg 2  x22 o/or 2000kg
Lifting Speed	25-30m/min	25-40m/min (depending on the load)
Max Anchored Height	220m	220m
Internal Cage Dimensions	1 2.20m x 1.50m 2 3.00m x 1.50m	1 2.20m x 1.50m 2 3.00m x 1.50m
Input Power Range	230/400 V -50 Hz 275-480 V-60 Hz 3Ph	230/400 V -50 Hz 275-480 V-60Hz 3Ph
Protection Switch	36A	36A
Power of the Motors	2 x 7.5kW Variable depending on required speed	2 x 7.5kW Variable depending on required speed
Minimum Line Power Suggested	25kW	25kW
Rack Automatic Greasing Pump	Yes	Yes

### Ramp Version



# SPECIFICATIONS ELECTROELSA

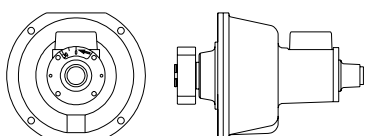
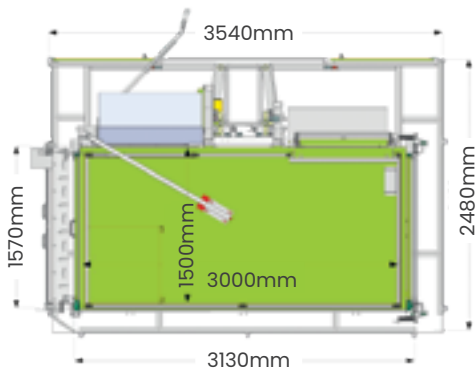
Height (m)	n° Mast Sections	F (daN)	P (daN/m²)
10	7	1279.9	
20	14	1305.8	
30	21	1470.3	
40	28	1689.4	
50	35	1908.5	
60**	42		3922
70	49		4209
80	55		4455
90	62		4742
100	69		5029
150	103		6423
200	138		7858

## Special Features

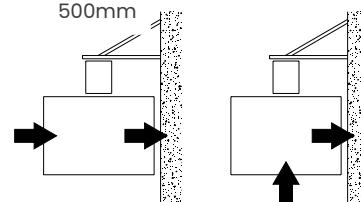
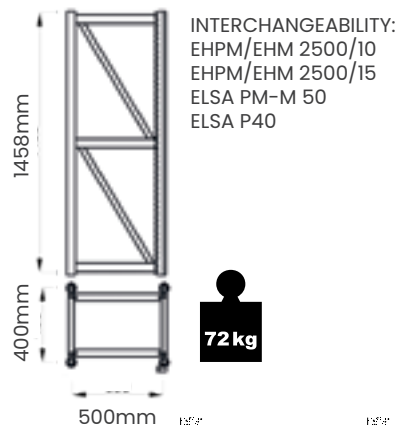
- Automatic control panel with Touch Screen and PLC
- Lifting speed from 25 to 40 m/min depending on transported load, automatically managed by inverter
- Biometric sensor for enabling the use of the unit
- Overload device



## Splitting Door Version



OVERSPEED SAFETY DEVICE WITH PROGRESSIVE STOP



POSSIBLE ACCESS CONFIGURATIONS

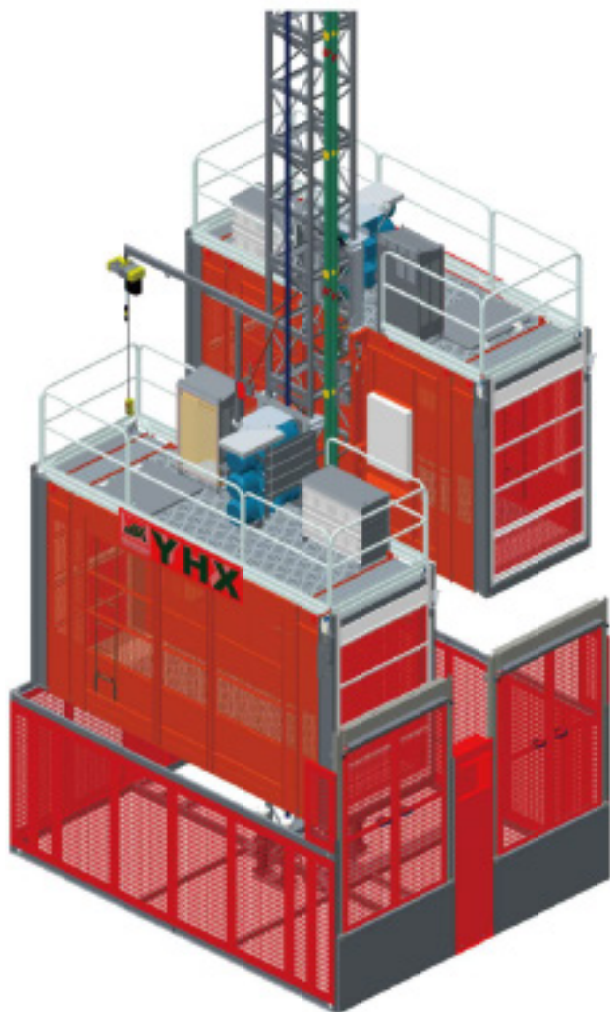
INTERCHANGEABILITY:  
 EHPM/EHM 2500/10  
 EHPM/EHM 2500/15  
 ELSA PM-M 50  
 ELSA P40

# ES-TECH ELECTROELSA

## SKY HOIST



## SPECIFICATIONS YHX SERIES



MAST SECTION

### Features

- Modular design, easy to make different combinations according to requirement
- Adopting high quality steel for increased strength and weight reduction
- Main components are hot dip galvanised which guarantees longer lifetime
- With frequency control , starting and stopping is smooth, low start-up current, small wear
- Using high efficiency helical gear box, lower power consumption and operation cost
- With many different models of cage door available
- The mast section is 650mm x 650mm x 1508mm, use centrally located rack
- The rack modulus is 5mm
- Cage sizes are (L x W x H):
  - 3.2m x 1.5m x 2.3m/2.0m
  - 3.9m x 1.5m x 2.3m/2.0m
  - 4.6m x 1.5m x 2.3m/2.0m
- We can also design other cage sizes on user's request.



SAFETY DEVICE





## SPECIFICATIONS YHX SERIES

Model	Payload	Speed	Motor Power	Inverter Power
SC100 SC100/100	1000	0 - 35m/min	2 x 9.5kW	22kW
		0 - 46m/min	2 x 13kW	30kW
		0 - 54m/min	2 x 16kW	37kW
		0 - 63m/min	2 x 20kW	45kW
		0 - 96m/min	3 x 20kW	75kW
SC200 SC200/200	2000	0 - 35m/min	2 x 13kW	30kW
		0 - 46m/min	2 x 20kW	45kW
		0 - 54m/min	2 x 20kW	45kW
		0 - 63m/min	2 x 26kW	75kW
		0 - 96m/min	3 x 28kW	110kW
SC250 SC250/250	2500	0 - 35m/min	2 x 16kW	37kW
		0 - 46m/min	3 x 16kW	55kW
		0 - 54m/min	3 x 16kW	55kW
		0 - 63m/min	2 x 20kW	75kW
		0 - 96m/min	3 x 32kW	110kW
SC300 SC300/300	3000	0 - 35m/min	2 x 20kW	45kW
		0 - 46m/min	3 x 20kW	75kW
		0 - 54m/min	3 x 20kW	75kW
		0 - 63m/min	3 x 26kW	90kW
		0 - 96m/min	3 x 35kW	132kW

SKY YHX SERIES  
HOIST



# SkyTech Loading Platforms for High-Rise Construction New Zealand Wide

When working at heights is an everyday necessity for your business or project, you need an innovative solution that is safe, reliable, and easy to use. Our Sky Decks provide a cost-effective and flexible answer to all of these and many other issues that are unique to providing access to personnel and materials in high-rise working environments.

Our system lends itself well to situations involving crane hire facilities, on-going construction projects, plant maintenance and many other applications.

**SKY DECKS**



Whatever level or size of project you are working with, our range of Sky Decks offers the perfect match with your specific requirements.

Our main crane deck options are 2200, 2800, 3100 and 4200, all with a SWL of up to 5000kg.

## Our Innovative Sky Decks

Our product represents a superb system that is cost effective and uncompromising in both quality and safety. It has been thoughtfully designed by a team that understands the demands of working at heights with platforms and other access equipment systems.

### Features

- Rear rollers for ease of installation
- Harness anchor points
- Safe working loads of up to 5 Tonnes
- Reduced overall costs on comparable products

### We also provide a range of accessories that include:

- Hold down brackets
- Extended props
- Back Props



Further flexibility in 4 standard widths provides accessibility for a range of situations, with a maximum outboard of 5250mm.

Safety locking access ramps, guard rails and extending supports all come as standard. The innovatively designed units stack flat and interlock when not in use or during transport.

# SKY DECKS



SKYTECH

# SPECIFICATIONS2200

	4500mm Outboard	4750mm Outboard	5000mm Outboard	5250mm Outboard
SWL-UDL	5000kg	4000kg	3200kg	2500kg
R <sub>A</sub>	7.6t	6.7t	6.0t	5.4t
R <sub>B</sub>	3.7t	3.3t	3.0t	2.7t
R <sub>C</sub>	0.0t	0.0t	0.0t	0.0t

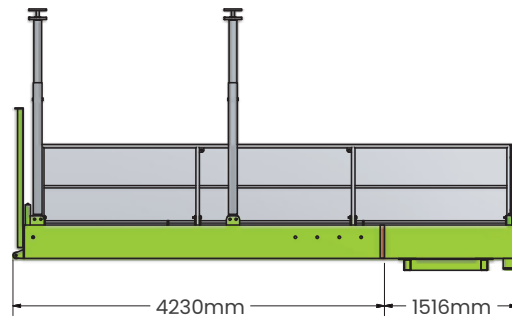
Reaction on each side of the platform. Assumed load always centre both ways on the outboard of the platform. All loads are static loads. **No load factors applied.**

Horizontal force not taken into account.

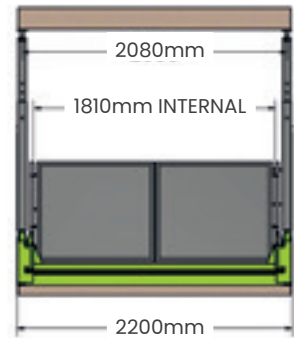
Reactions provided based on rigid supports i.e. effects on deflections of supporting slabs not factored into design.

Total Weight	2520kg
--------------	--------

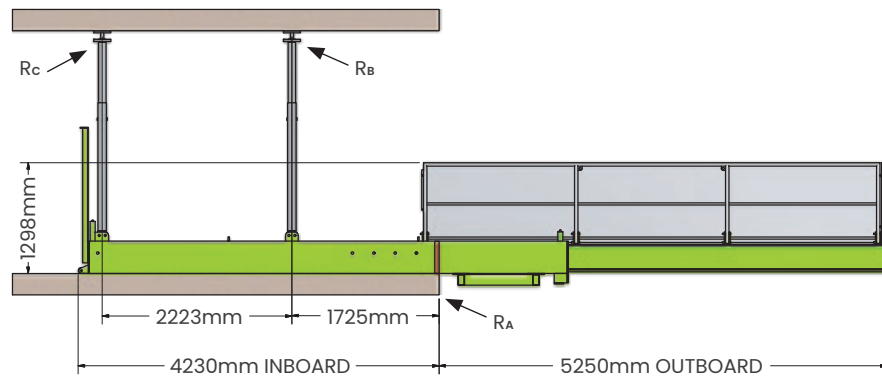
Side Elevation - Retracted



Front Elevation



Side Elevation - Fully Extended



**SKY DECK 2200**



# SPECIFICATIONS2800

	4500mm Outboard	4750mm Outboard	5000mm Outboard	5250mm Outboard
SWL-UDL	5000kg	4000kg	3200kg	2500kg
R <sub>A</sub>	7.6t	6.7t	6.0t	5.4t
R <sub>B</sub>	3.7t	3.3t	3.0t	2.7t
R <sub>C</sub>	0.0t	0.0t	0.0t	0.0t

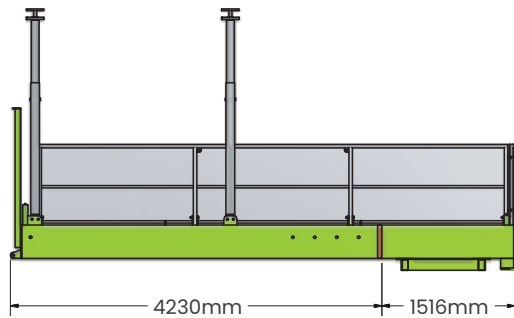
Reaction on each side of the platform. Assumed load always centre both ways on the outboard of the platform. All loads are static loads. **No load factors applied.**

Horizontal force not taken into account.

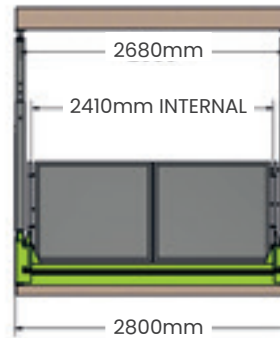
Reactions provided based on rigid supports i.e. effects on deflections of supporting slabs not factored into design.

Total Weight	2705kg
--------------	--------

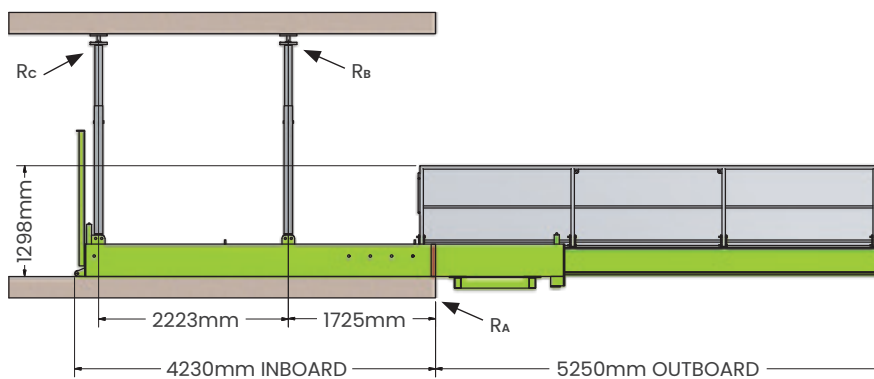
Side Elevation - Retracted



Front Elevation



Side Elevation - Fully Extended



SKY DECK 2800



# SPECIFICATIONS3100

	4500mm Outboard	4750mm Outboard	5000mm Outboard	5250mm Outboard
SWL-UDL	5000kg	4000kg	3200kg	2500kg
R <sub>A</sub>	7.6t	6.7t	6.0t	5.4t
R <sub>B</sub>	3.7t	3.3t	3.0t	2.7t
R <sub>C</sub>	0.0t	0.0t	0.0t	0.0t

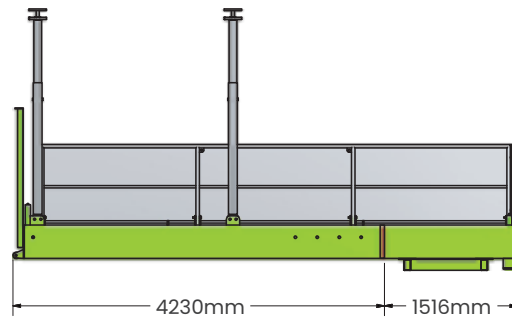
Reaction on each side of the platform. Assumed load always centre both ways on the outboard of the platform. All loads are static loads. **No load factors applied.**

Horizontal force not taken into account.

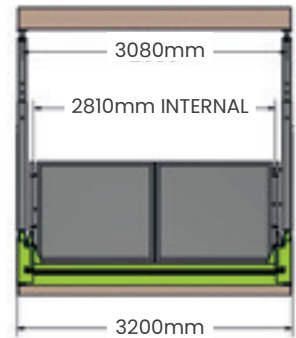
Reactions provided based on rigid supports i.e. effects on deflections of supporting slabs not factored into design.

Total Weight	2825kg
--------------	--------

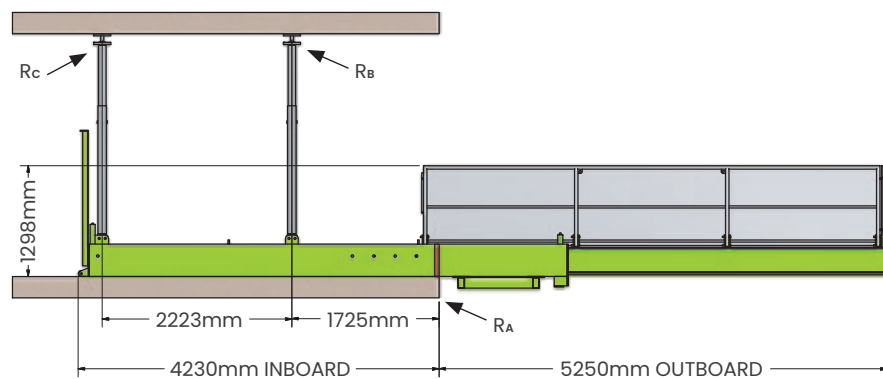
Side Elevation - Retracted



Front Elevation



Side Elevation - Fully Extended



# SPECIFICATIONS 4200

	4500mm Outboard	4750mm Outboard	5000mm Outboard	5250mm Outboard
SWL-UDL	5000kg	4000kg	3200kg	2500kg
R <sub>A</sub>	8.3t	7.7t	7.1t	6.6t
R <sub>B</sub>	4.0t	3.8t	3.7t	3.5t

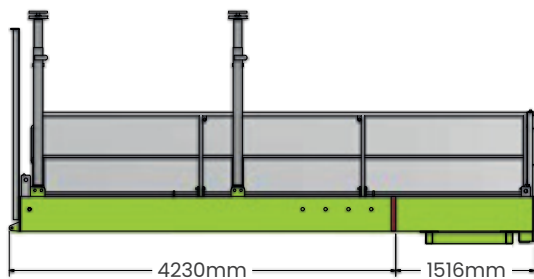
Reaction on each side of the platform. Assumed load always centre both ways on the outboard of the platform. All loads are static loads. **No load factors applied.**

Horizontal force not taken into account.

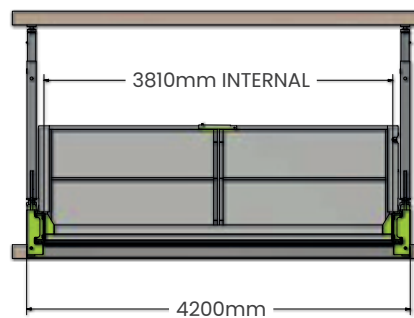
Reactions provided based on rigid supports i.e. effects on deflections of supporting slabs not factored into design.

Total Weight	Weight of Moving Deck	Weight of Fixed Section
3680kg	2435kg	1240kg

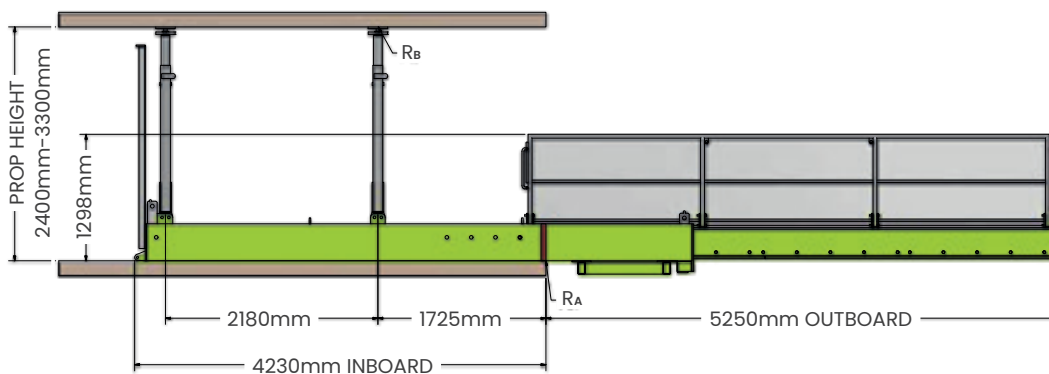
Side Elevation - Retracted



Front Elevation



Side Elevation - Fully Extended



0027

SKY DECK

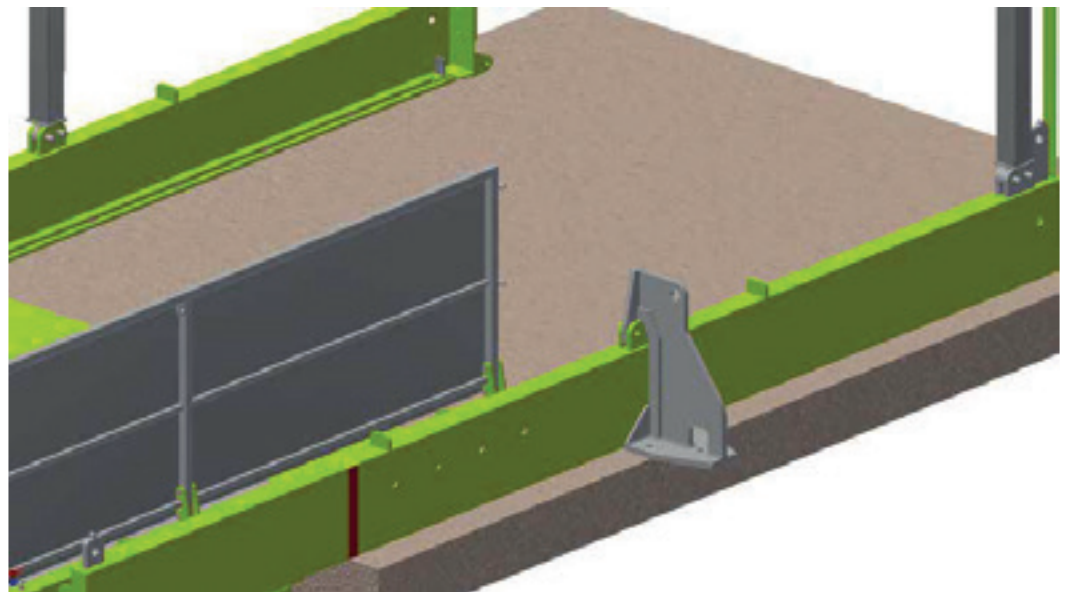


## HOLD DOWN BRACKET SYSTEM

Hold Down Bracket



Hold Down with Bolts and Bottom Plate

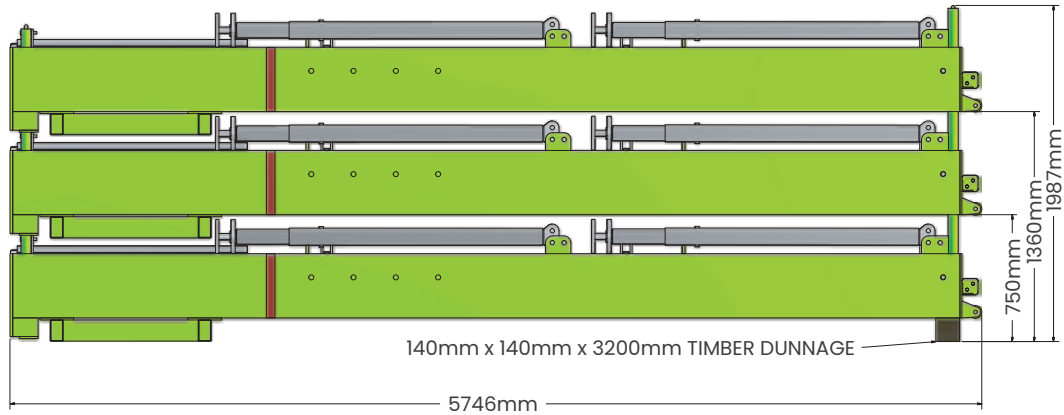




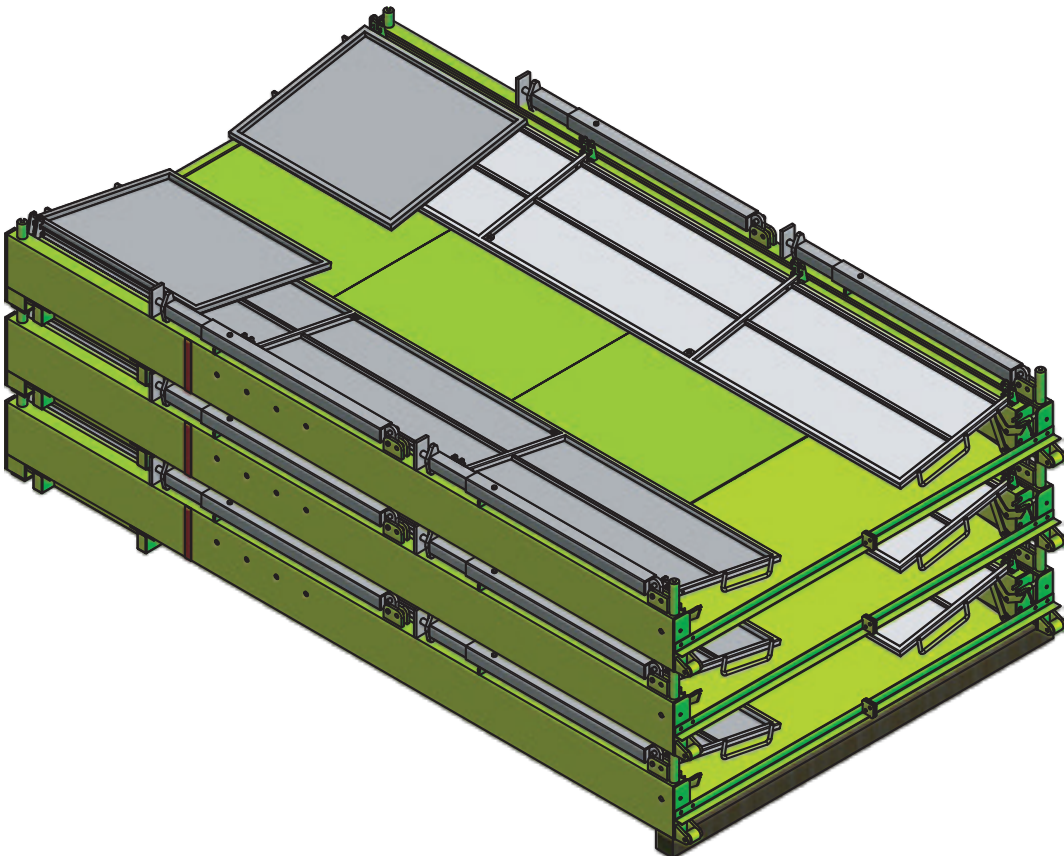
# TRANSPORTATION SPECIFICATIONS

When our SKY DECKS are not in use or need to be transported, their innovative design gives them the ability to stack flat and interlock into each other for added site and in-transit safety.

Side Elevation Stacked



Perspective View Stacked



SKY DECK TRANSPORTATION



## CONTACTUS

Our products represent a superb system that is cost effective and uncompromising in both quality and safety. They have been thoughtfully designed by a team that understands the demands of working at heights with SkyTech hoists and platforms.

Whatever task needs carrying out at heights, you can be certain that ease of access will result in both improved efficiency and more importantly, a safer working environment.

Our team are experts in the industry and are committed to finding the best on site solution for you. We enjoy seeing our customers succeed.

If you have been searching for a cost-effective solution to the problem of high-rise working, you can relax because our SkyTech products will provide exactly what the job requires.



We service New Zealand wide

**South Island**  
200 Greigs Road  
Kaiapoi  
Canterbury 7691

027 242 3853

**North Island**  
34B Greenpark Road  
Penrose  
Auckland 1061

022 415 7086

For more information, contact our team at [office@skytechnz.co.nz](mailto:office@skytechnz.co.nz)

**0508 skytech**  
**skytechnz.co.nz**



# SKYTECH



PROUDLY OWNED AND OPERATED IN  
**NEW ZEALAND**

All information stated on the specification sheets comes from relevant professional engineers engaged for the purpose of compliance with appropriate regulations. SkyTech believes that all information stated on this specification sheet to be true and correct at the time of printing. SkyTech accepts no responsibility for its accuracy and recommends perusing your own sources for confirmation of stated details. Contact SkyTech directly for any further information regarding this product. All loads are static loads i.e. no load factors applied. Horizontal forces are not taken into account.

For more information, contact our team at [office@skytechnz.co.nz](mailto:office@skytechnz.co.nz)

**0508 skytech**  
[skytechnz.co.nz](http://skytechnz.co.nz)